

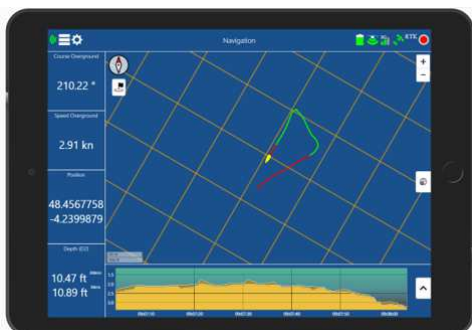


# BALI

**BALI (BATHymetry Light)** is a compact bathymetric solution, which is portable, affordable and extremely precise.

## BENEFITS

- Real time monitoring
- Wireless control
- Simple
- Smart connectivity
- Extremely accurate
- Affordable
- Portable



## EXTREMELY ACCURATE

Thanks to its GNSS antenna and the technique of Real Time Kinematic (RTK) satellite navigation, BALI offers enhanced precision accuracy at centimeter-level. The Single Beam Echosounder (SBES) provides depth measurements with a resolution of 1cm. The dual frequency transducers (f1 200KHz - f2 30KHz) can easily operate with an accuracy of 0.2% of depth.

## REALLY SIMPLE

Using BALI, even for non experienced operators, is super easy. The whole kit fits into a small case of a size comparable to that of a cabin baggage on planes. There are two cables to connect and it can be mounted on a single rod in less than 5 minutes. Monitoring and navigation is as intuitive as using smartphone app. Overall it is extremely ergonomic.

## SOPHISTICATED

BALI seamlessly connect to the global navigation satellite system GPS, Glonass, Galileo, Beidou. It can acquire RTK correction streams via either a GSM built-in modem or via its embedded UHF modem.

Operators can use a smartphone, tablet or PC connected via Wi-Fi to monitor status in real time, use the navigation interface and extract bathymetry results.

From a transducer standpoint, it is possible to accommodate between a Single Beam Echosounder (SBES) emitting either a single or dual frequency sound wave.

Horizontal and vertical accuracy can be achieved on four levels: 1) using a Satellite-based Augmentation System (SBAS), 2) receiving Real Time Kinematics (RTK) corrections via a GSM built-in modem, 3) receiving RTK corrections via UHF built-in modem, 4) using a Precise Point Positioning (PPP) service where precision is obtained by using L-Band corrections, without the need to connect to a base station.

## MORE INFO

Website: <http://caddenproducts.com>

<http://www.cadden.fr/en>

Sales Manager: Danilo Giralucci

Email: [danilo.giralucci@cadden.fr](mailto:danilo.giralucci@cadden.fr)

Tel.: +33 (0)7 61 55 99 45 (MON-FRI 9AM-5PM GMT+1)



## FEATURES

Case dimensions:	400 x 300 x 200mm
Weight:	8kg
Battery:	NiMH
Wifi:	yes
Beam width:	9° (200KHz) 26° (30KHz)
RTK corrections:	UHF or 3G modem
GNSS:	GPS, Glonass, Galileo, Beidou

## PERFORMANCES

Position :	RTK~1cm LBand~10cm
Resolution:	1cm
Accuracy:	2cm or 0.2% of water depth
Depth range:	0.5-100m (200KHz) 0.5-200m (30KHz)
Ping rate:	5Hz
Autonomy :	6h (200KHz) 5h (200/33KHz)

Specifications and descriptions are subject to change without notice – v1.1