

Applications

Underwater Structure Monitoring, ie. Bridge scouring

Finding Sunken Vehicles

Underwater Rescue Operations

Finding Dead Bodies

Finding Peer Divers



High Resolution Underwater Imaging Sys.



Specifications

900 kHz High resolution system

Max range : 60m

Weight: 2.5 kg(air) / 0.8kg(water)

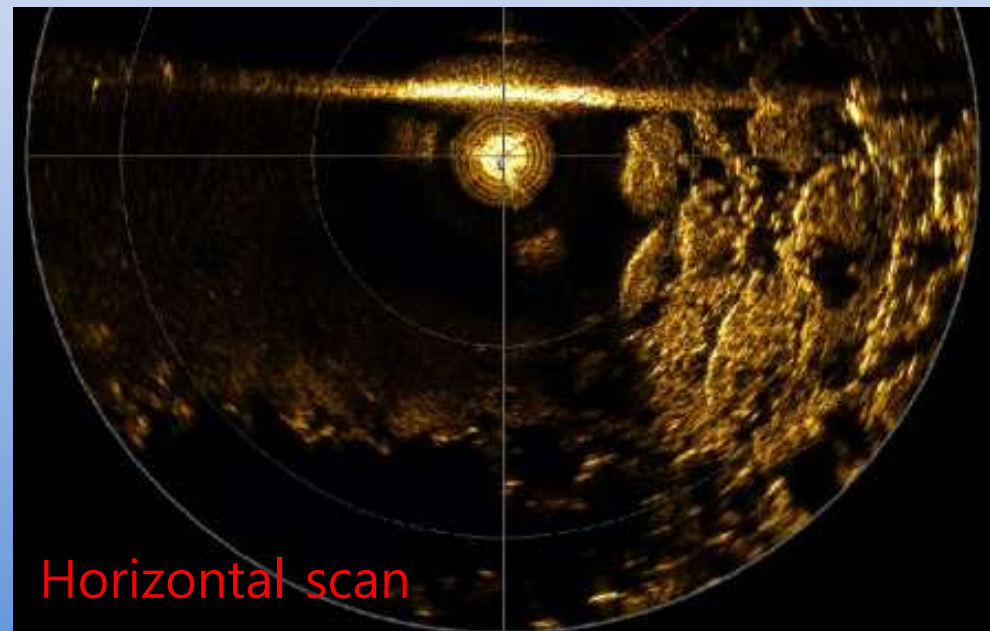
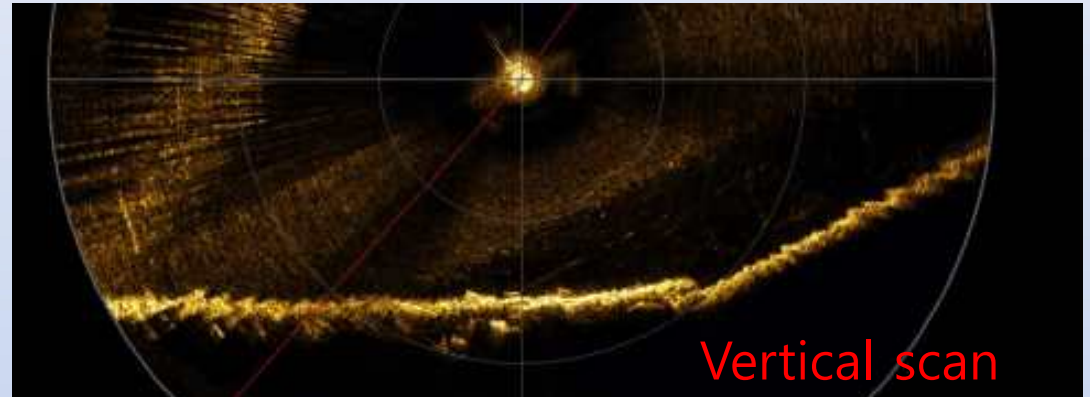
Dimension: D140mm, H120 mm



High Resolution Underwater Imaging Sys.

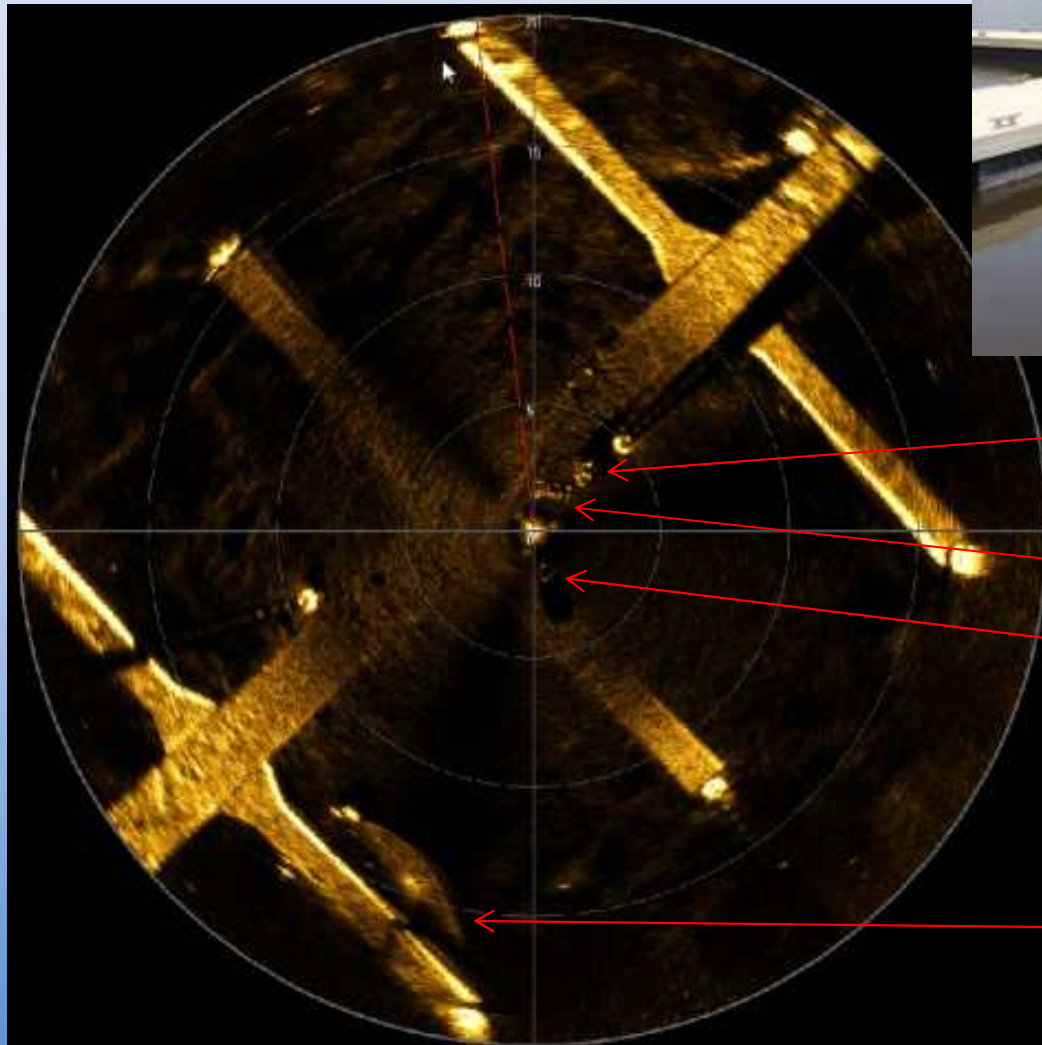


Harbor scan



High Resolution Underwater Imaging Sys.

Marina Scan



Bicycle(2)

Letter

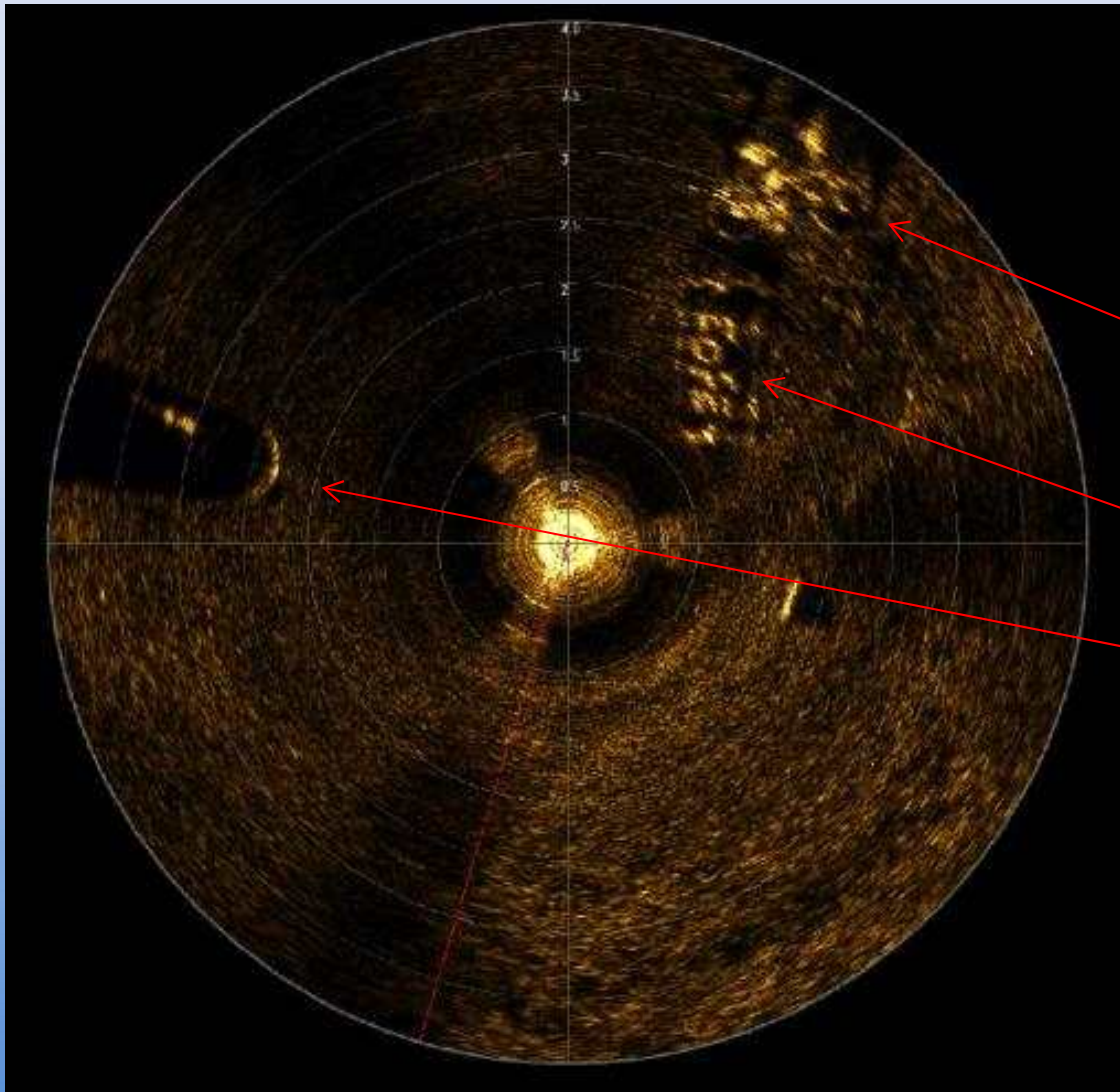
Tire(1)

Boat(4)

High Resolution Underwater Imaging Sys.



Marina Scan



Bicycle

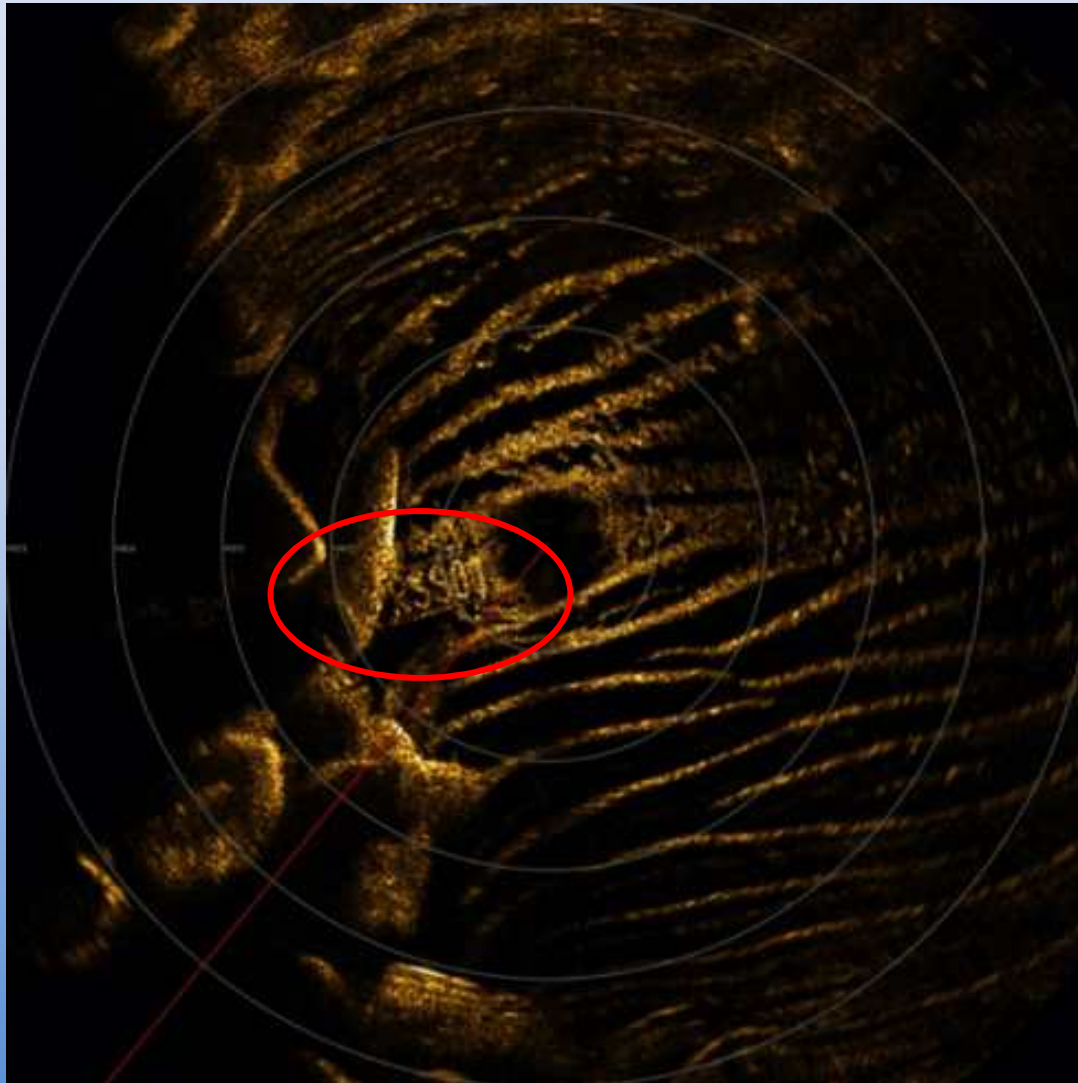
Letters

Tire

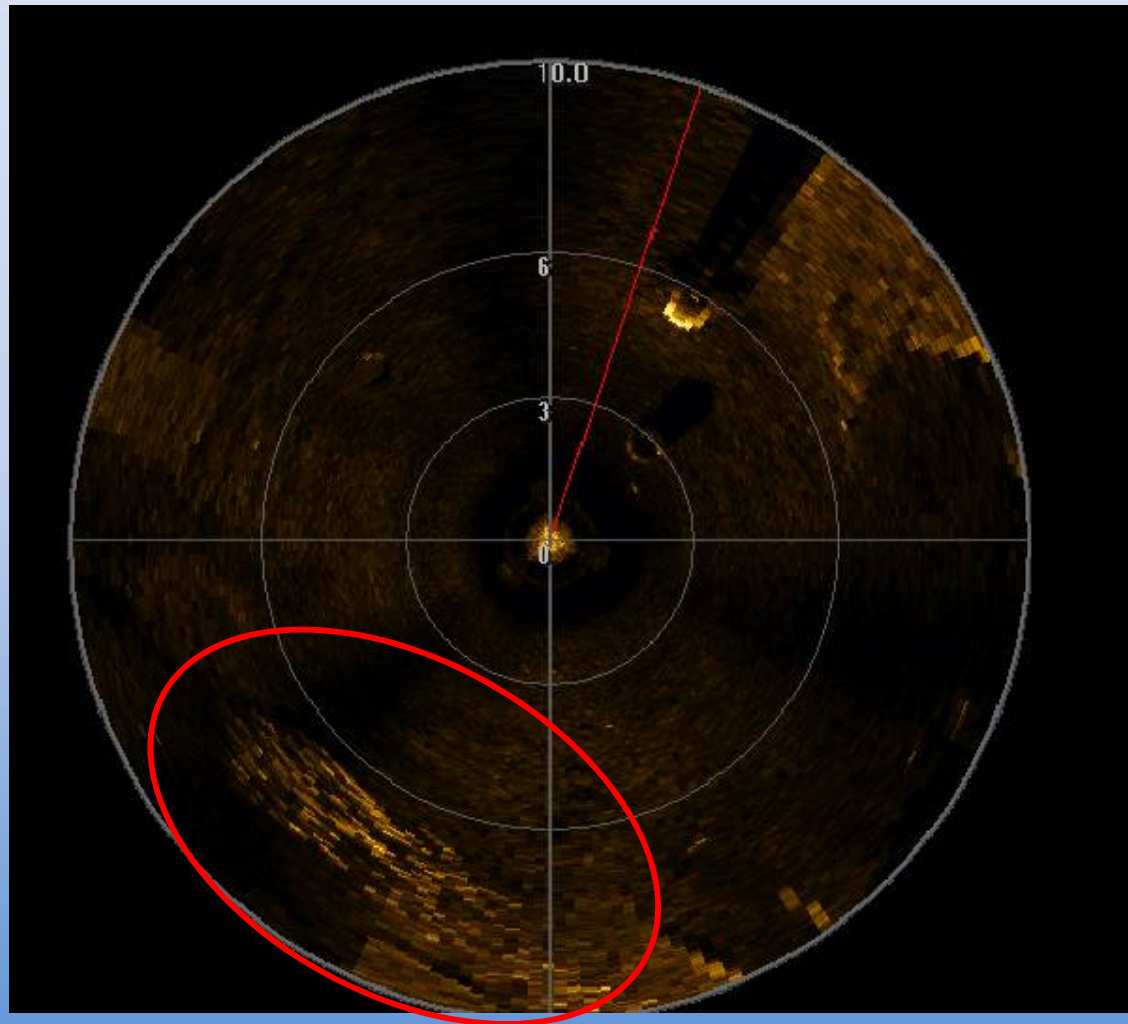
High Resolution Underwater Imaging Sys.



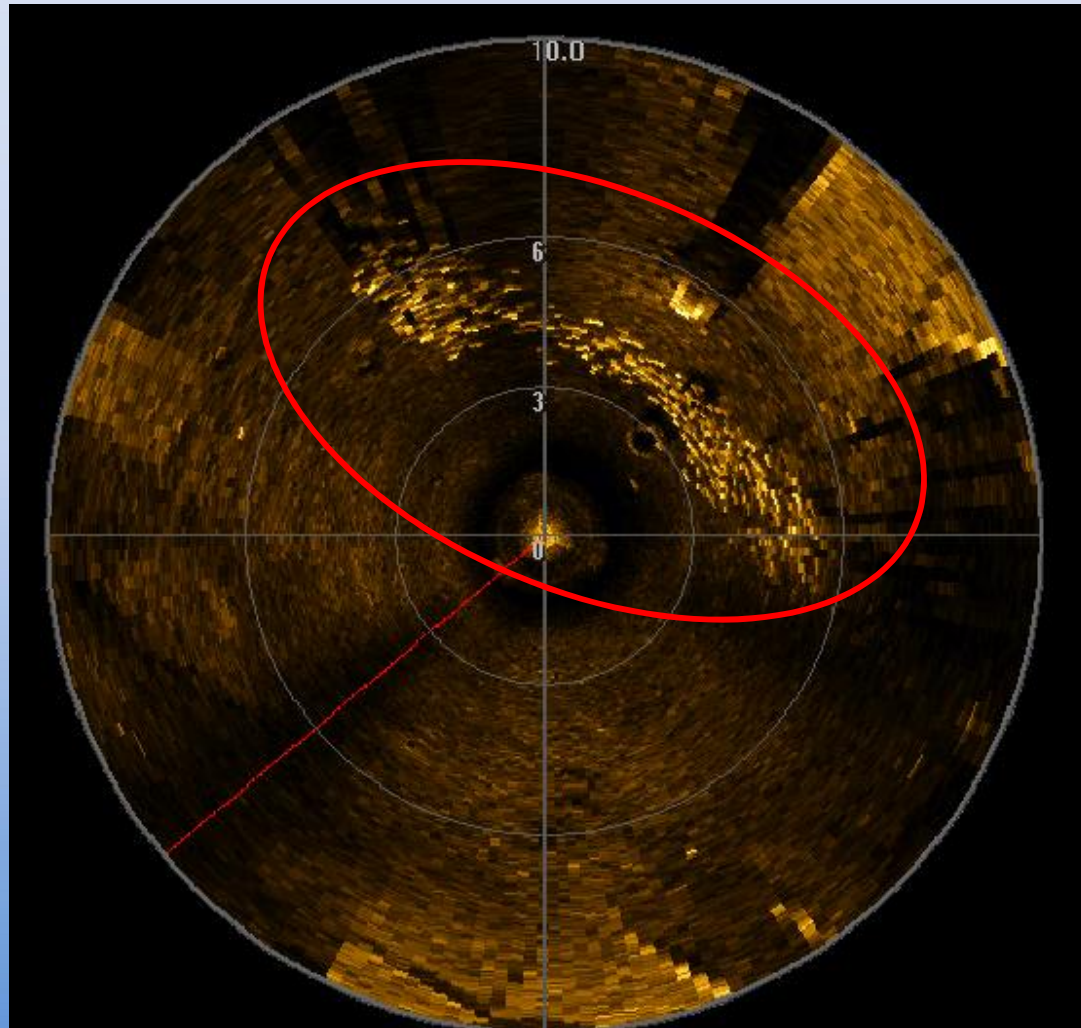
Sand ripples & target



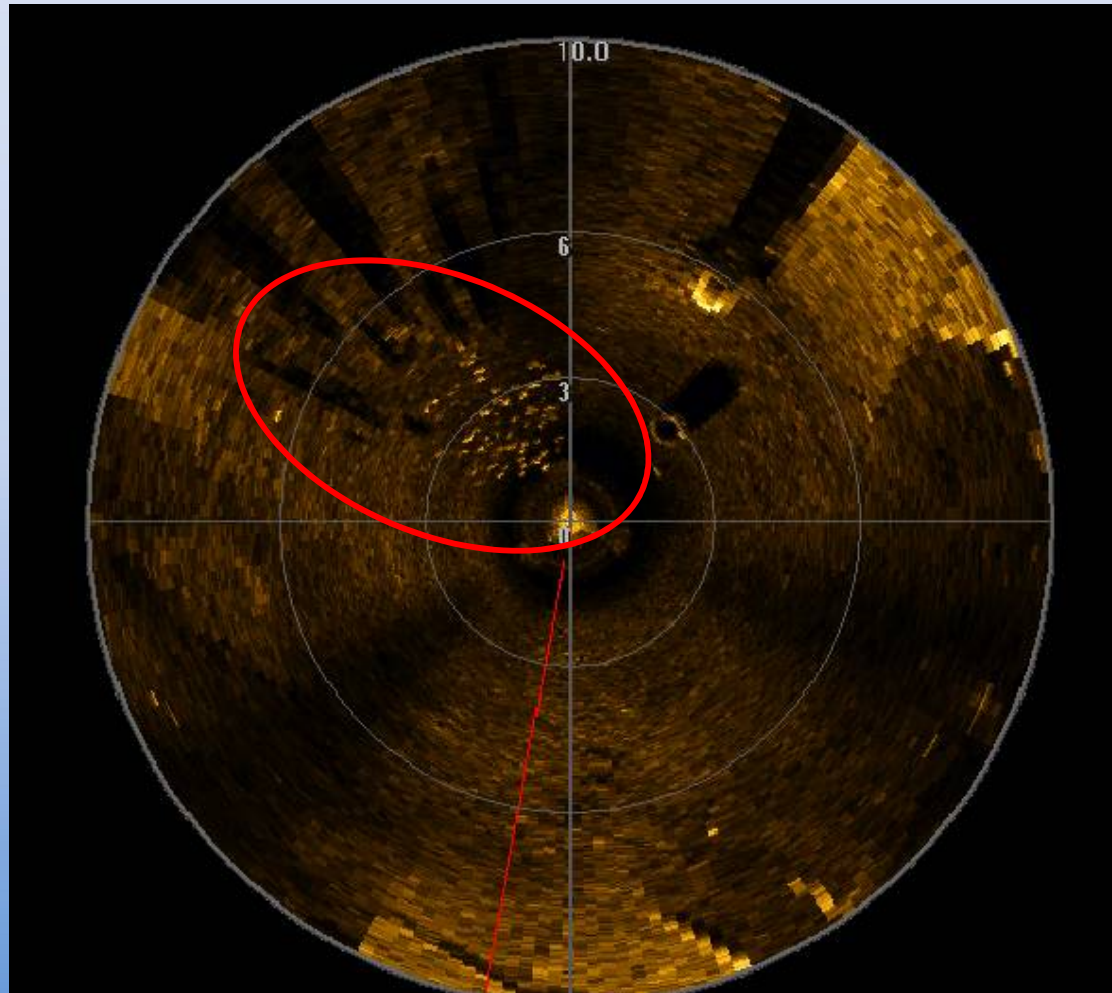
School of Fish



School of Fish



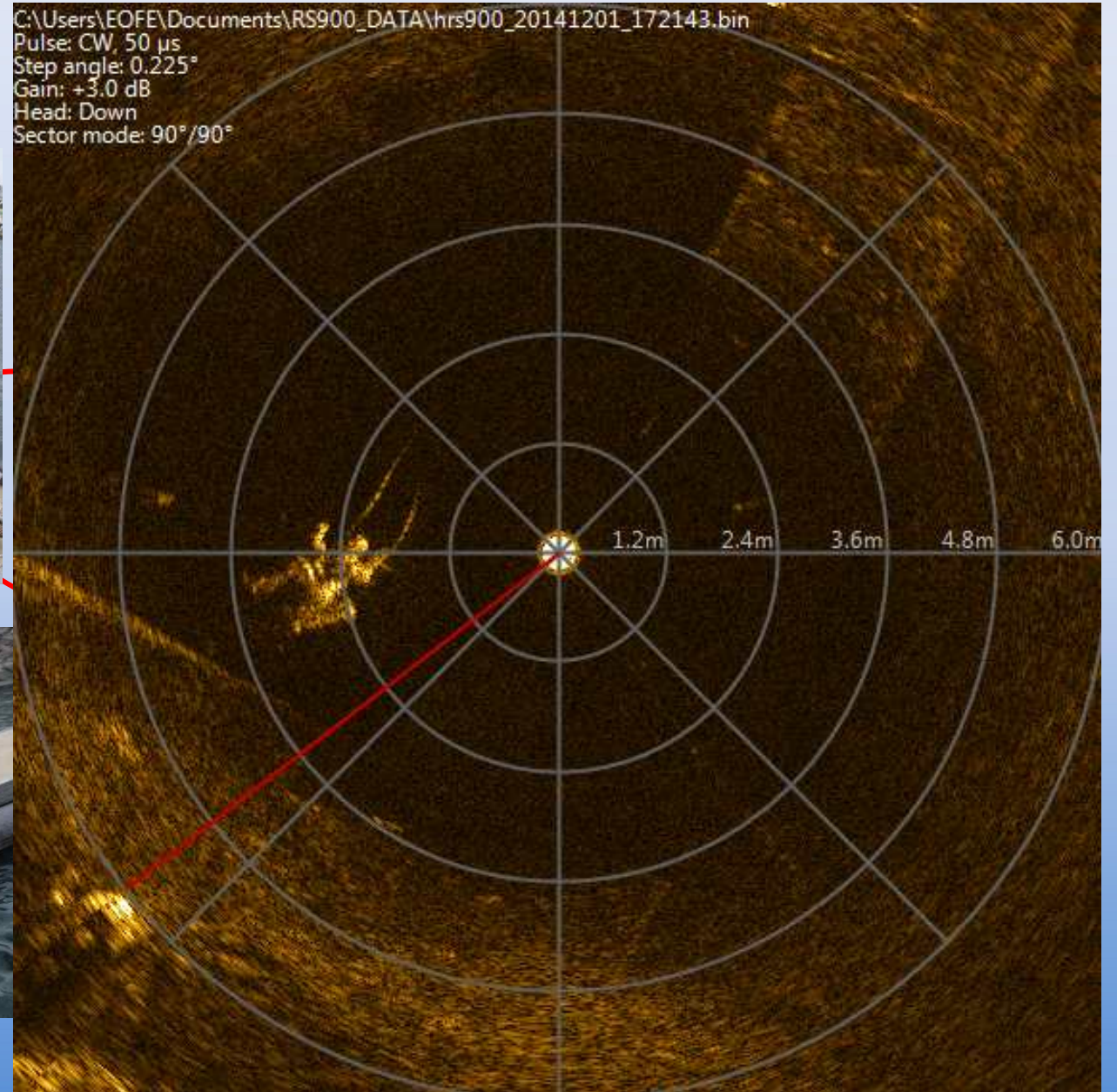
School of Fish



High Resolution Underwater Imaging Sys.



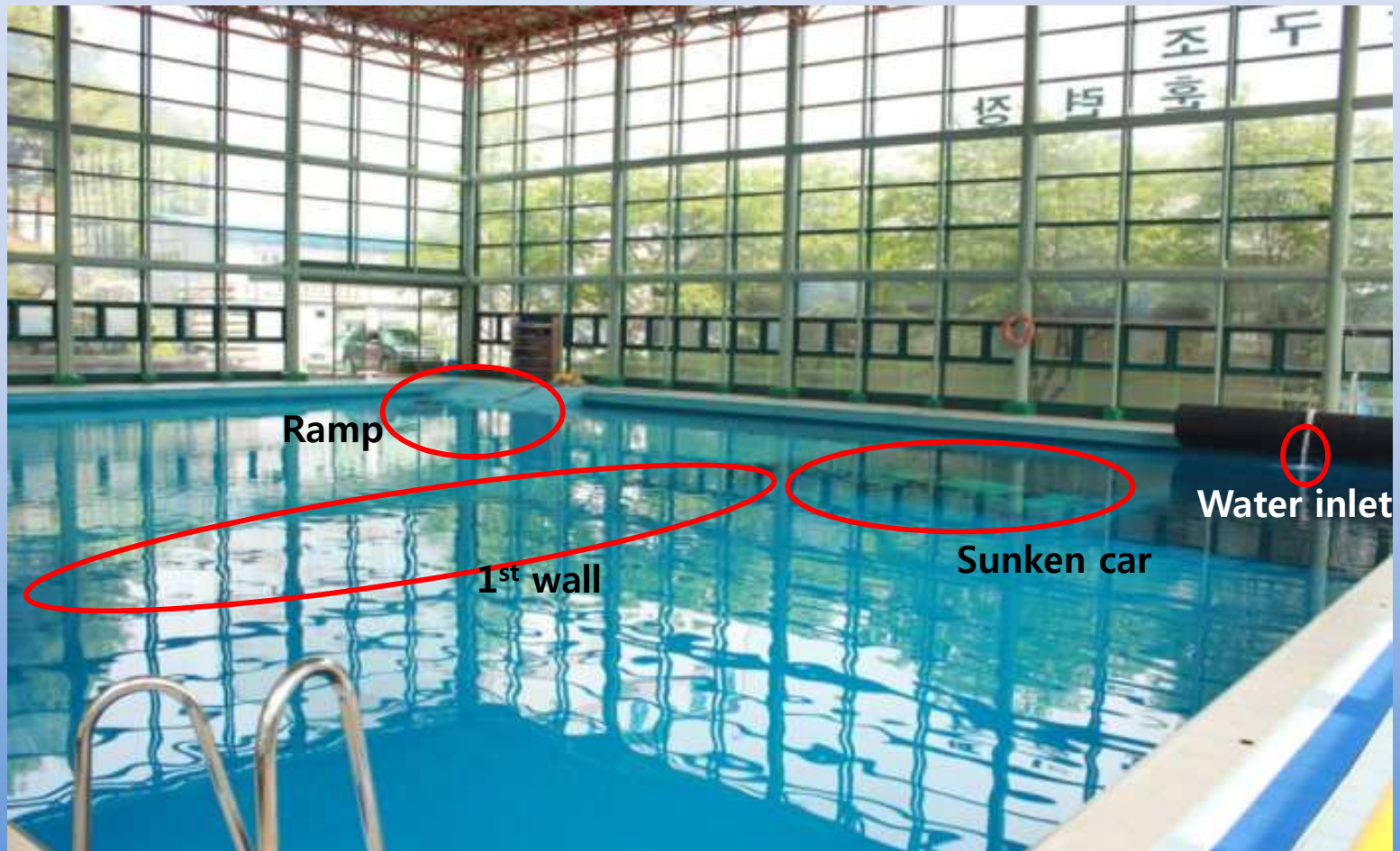
SAR



High Resolution Underwater Imaging Sys.



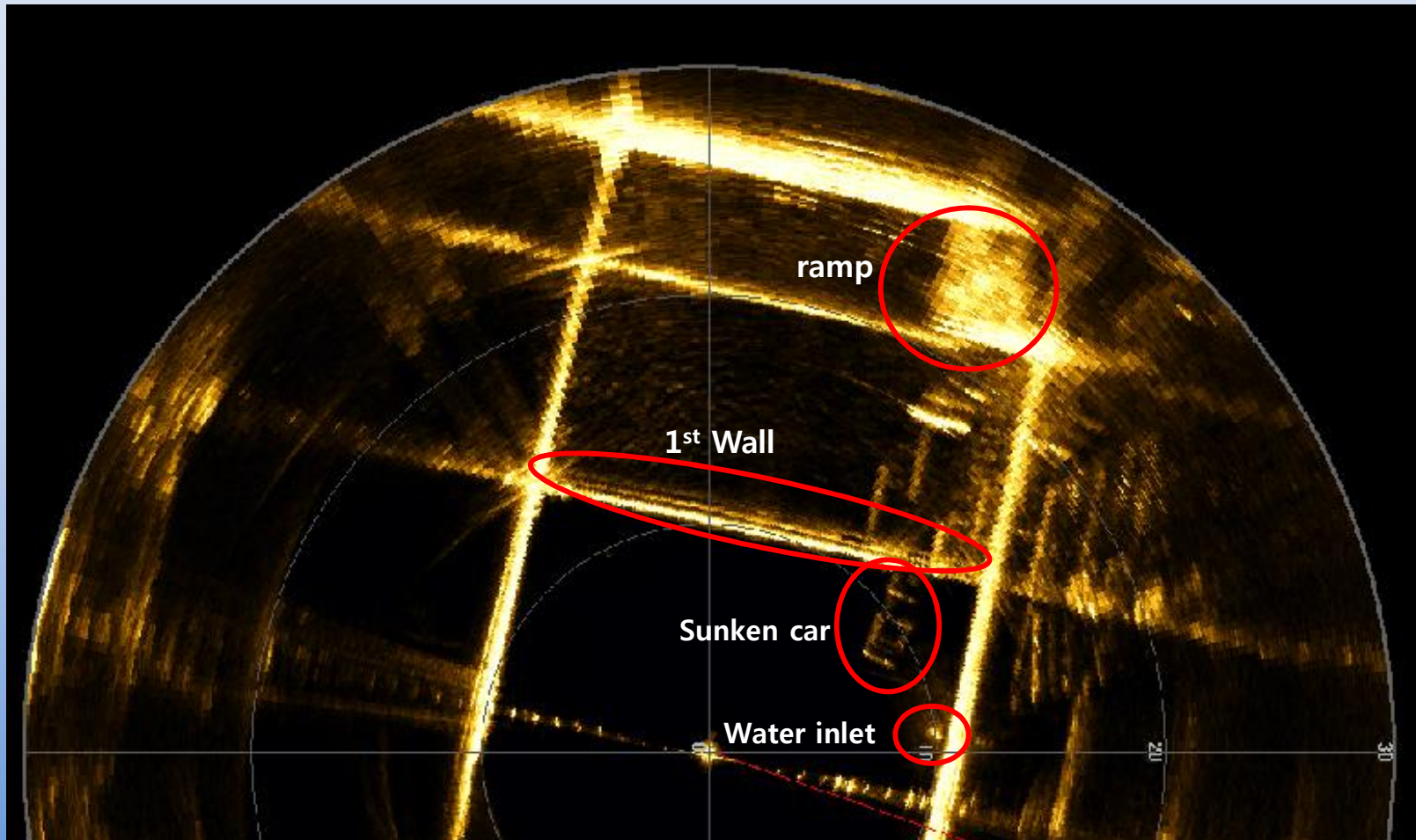
SAR @ Rescue Center



High Resolution Underwater Imaging Sys.



SAR @ Rescue Center



High Resolution Underwater Imaging Sys.

SAR @ Rescue Center



Sunken car

